

enaon / eucWatch Public[Code](#) [Issues 13](#) [Pull requests](#) [Actions](#) [Projects](#) [Wiki](#) [Security](#) [Insights](#)main [eucWatch / tools / hackme2 /](#)

enaon Update readme.md ...

✓ on Oct 24, 2022 [History](#)

..

images	last year
readme.md	3 months ago
step1_espruino_2v10.102_magic3-dafit.bin	last year
step3_espruino_2v10.364_magic3.zip	4 months ago
step4_S140-6.0.0-magic3.zip	last year
step5-espruino_2v14_eucWatch_Magic3.zip	4 months ago
step5-espruino_2v14_eucWatch_Rock.zip	4 months ago

☰ readme.md

Install espruino on the KOSPET MAGIC3 - ROCK smart watch:

Before installation:

You will need an android smartphone, a chrome based web browser and the [DaFlasher](#) app from the playstore, made by atc1441.

NOTICE:

Use latest DaFlasher version.

Using the DaFlasher app, you will upload four files to the watch. The second step will be done using the browser, not DaFlasher.:

1. custom espruino image that will replace the dafit app and allow for installing a bootloader using step2.
2. bootloader, using the chrome browser and the eucWatch loader.
3. espruino image v2.10.
4. softDevice image, (downgrade to 6.0.0).

5. latest espruino image (select the one for your watch, Magic or Rock)

original links: [espruino app image, bootloader & SoftDevice](#) (step 1,2&4) [espruino image](#) (step 3)

Notice Do not "right click"->"save as" on github, use the download button instead, or the following links for convenience

(it is safe to "right click->save link as" on the links below:)

[Step1 file](#)

[Step3 Magic3 Espruino image file](#)

[Step4 SoftDevice file](#)

[Step5 Magic3 Espruino image file](#) or [Step5 Rock Espruino image file](#)

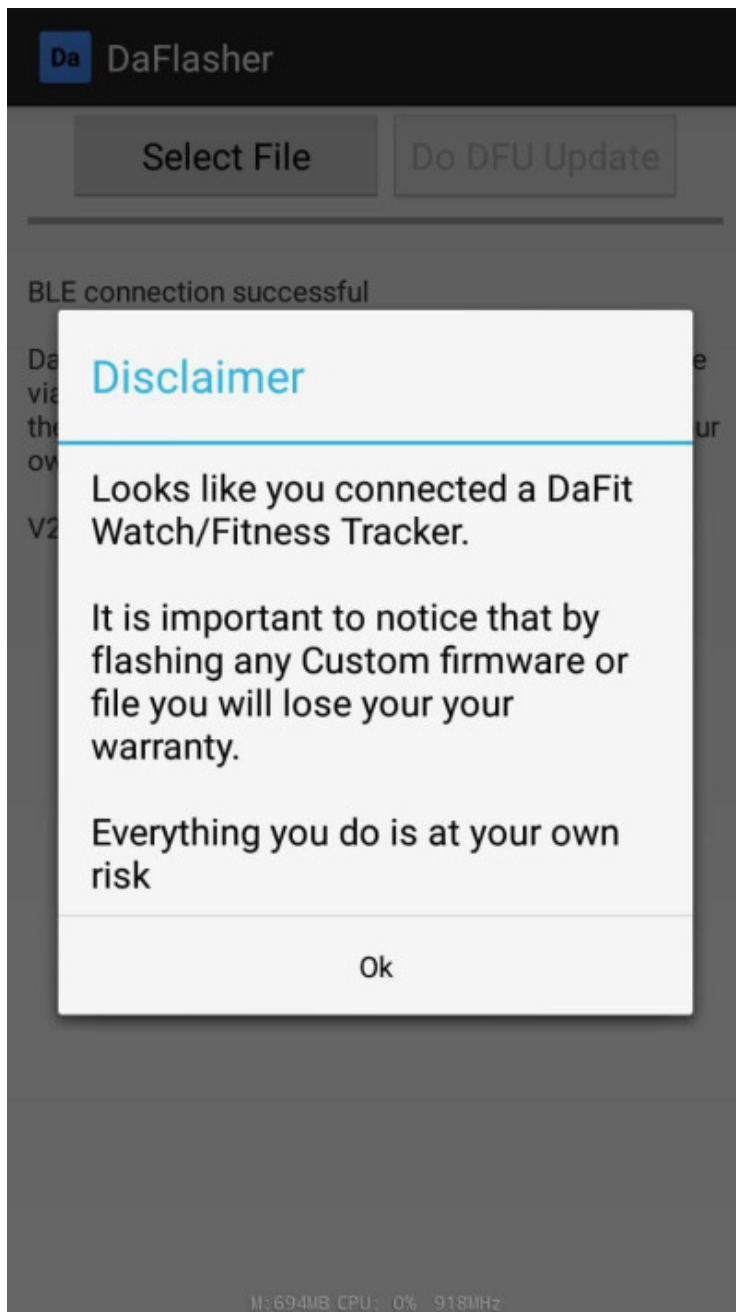
Installation:

Tip: Disconnect any accessories and stop any programs you know may be using the BT on the phone.

Tip: Disconnect the watch from the charger, make sure it is over 50% charged.

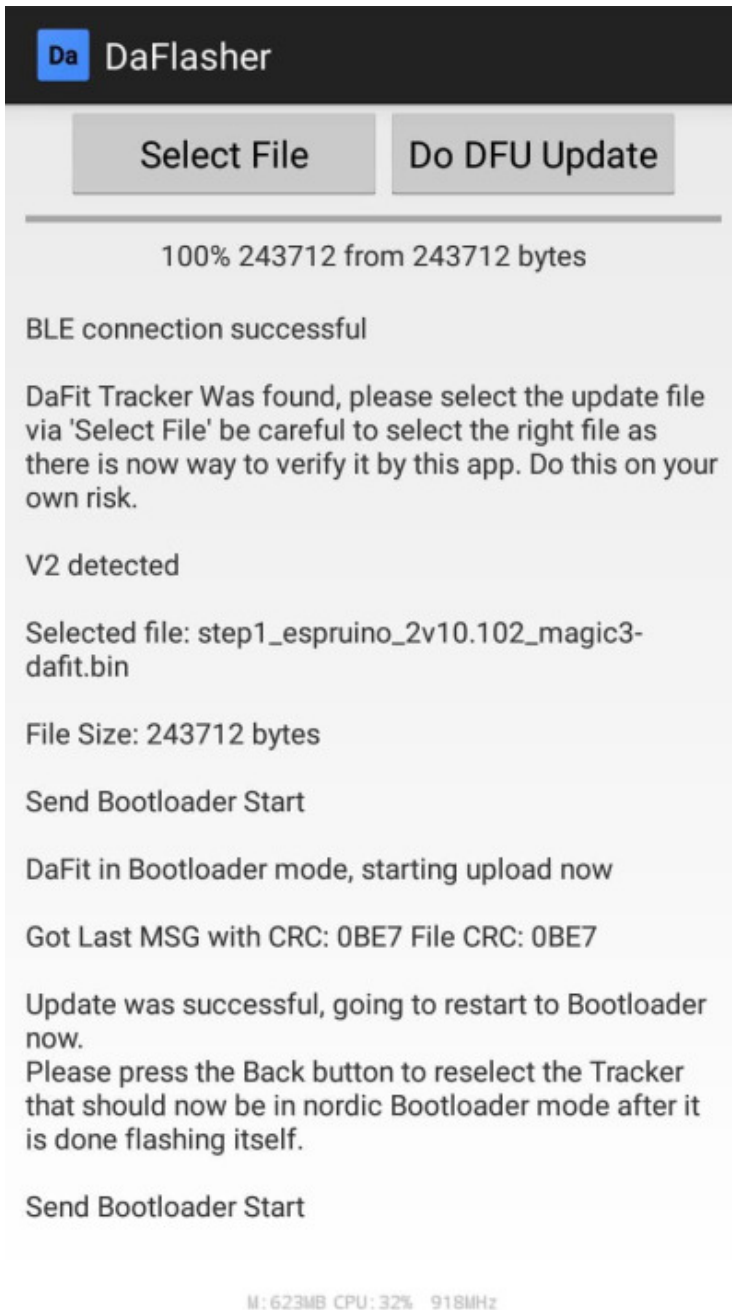
Step 1.

Open daFlasher, search for the Magic3/Rock and select it. The program will report a DaFit device and offer to hack it:



Press **Select File** and choose the file named step1-xxx you just downloaded from this how-to.

Tip: this step will needs a couple of minutes, you should see the bar moving within seconds, if not, close(kill) the app and try again:



When finished the watch screen will be black, like off. Close DaFlasher, the next step will be done using a chrome browser, phone or PC.

Step 2.

Using a chrome based browser, visit this [page](#).

Press the "connect" button on top right, find the watch (it will be ROCK_XXXX/MAGIC3_XXXX) and connect.

Tip: If the site fails to connect, wait a few second, refresh and try again.

When connected, go to "Library" tab, then to "Core" section, and upload the "bootloader - MAGIC - ROCK (v1.00)" file to the watch using the arrow next to it.

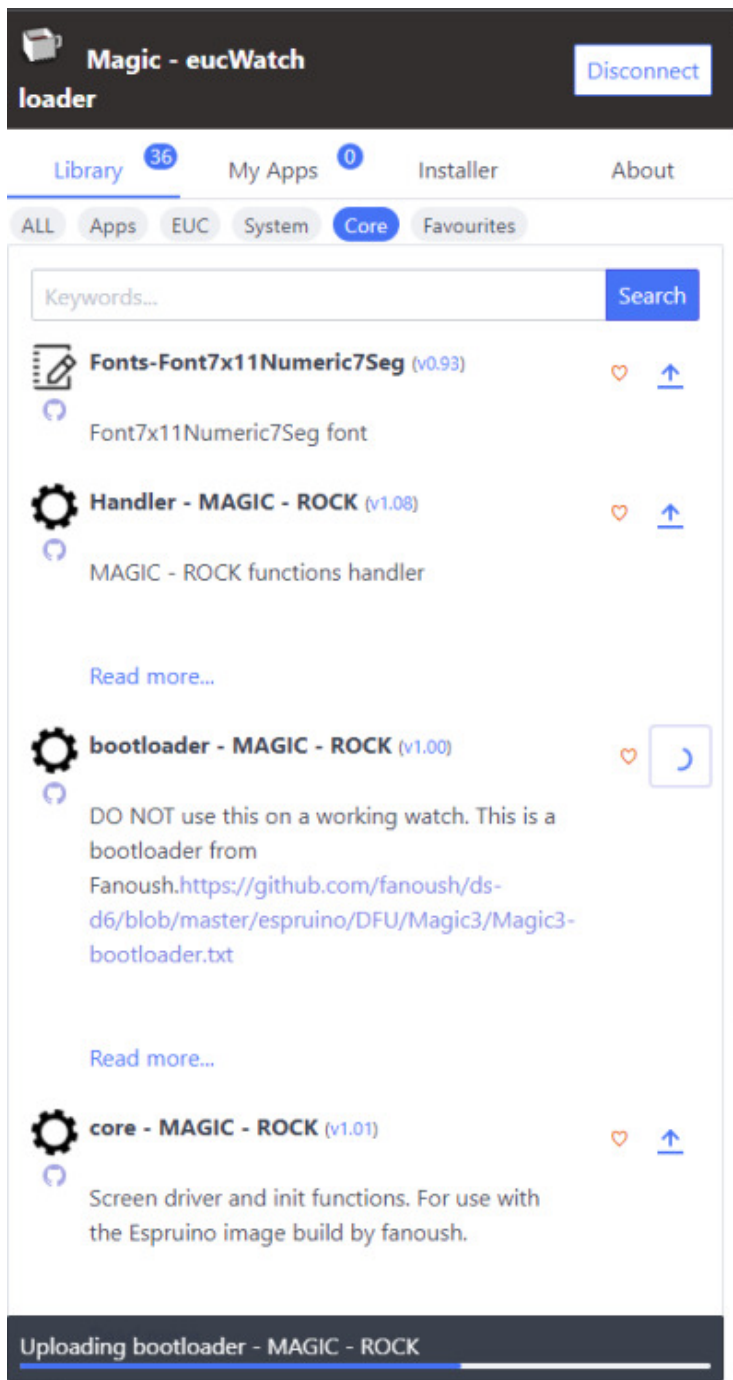
Magic - eucWatch loader Disconnect

Library **36** My Apps **0** Installer About

ALL Apps EUC System **Core** Favourites

Keywords... Search

- Fonts-Font7x11Numeric75Seg (v0.93)** ♥ ↑
Font7x11Numeric75Seg font
- Handler - MAGIC - ROCK (v1.08)** ♥ ↑
MAGIC - ROCK functions handler
- [Read more...](#)
- bootloader - MAGIC - ROCK (v1.00)** ♥ ↑
DO NOT use this on a working watch. This is a
bootloader from
Fanoush, <https://github.com/fanoush/ds-d6/blob/master/esp32/IDEM/IDEM3/magic3-bootloader.txt>
- [Read more...](#)
- core - MAGIC - ROCK (v1.01)** ♥ ↑
Screen driver and init functions. For use with
the Espruino image build by fanoush.
- [Read more...](#)

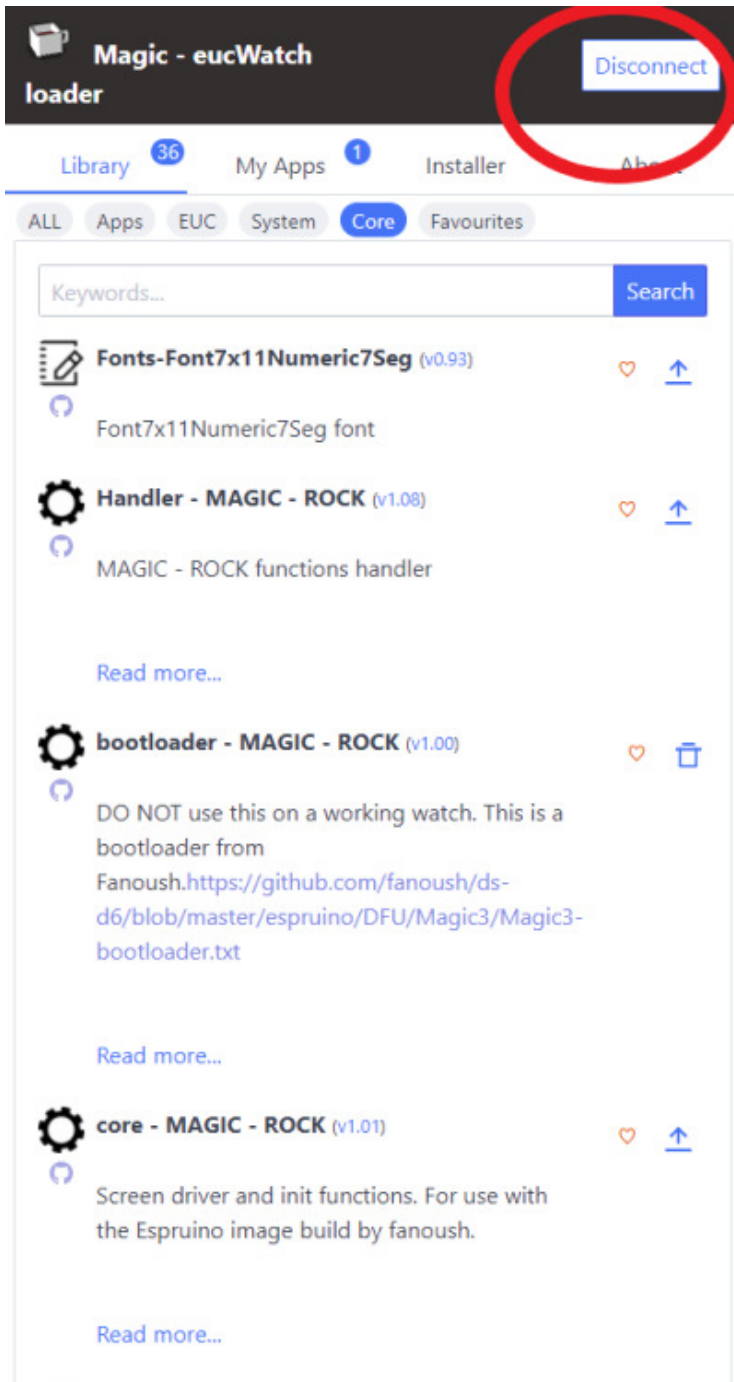


The screenshot shows the 'Magic - eucWatch loader' interface. At the top, there is a 'Disconnect' button. Below it, navigation tabs include 'Library' (with a badge of 36), 'My Apps' (with a badge of 0), 'Installer', and 'About'. A secondary row of filters includes 'ALL', 'Apps', 'EUC', 'System', 'Core' (selected), and 'Favourites'. A search bar with the placeholder 'Keywords...' and a 'Search' button is present. The main content area lists several items:

- Fonts-Font7x11Numeric7Seg (v0.93)**: Font7x11Numeric7Seg font. Includes a heart icon and an upload icon.
- Handler - MAGIC - ROCK (v1.08)**: MAGIC - ROCK functions handler. Includes a heart icon and an upload icon.
- Read more...**: A link to view more details.
- bootloader - MAGIC - ROCK (v1.00)**: DO NOT use this on a working watch. This is a bootloader from Fanoush. <https://github.com/fanoush/ds-d6/blob/master/espruino/DFU/Magic3/Magic3-bootloader.txt>. Includes a heart icon and a refresh icon.
- Read more...**: A link to view more details.
- core - MAGIC - ROCK (v1.01)**: Screen driver and init functions. For use with the Espruino image build by fanoush. Includes a heart icon and an upload icon.

At the bottom, a progress bar indicates 'Uploading bootloader - MAGIC - ROCK'.

When finished, press the "Disconnect" button on top right.

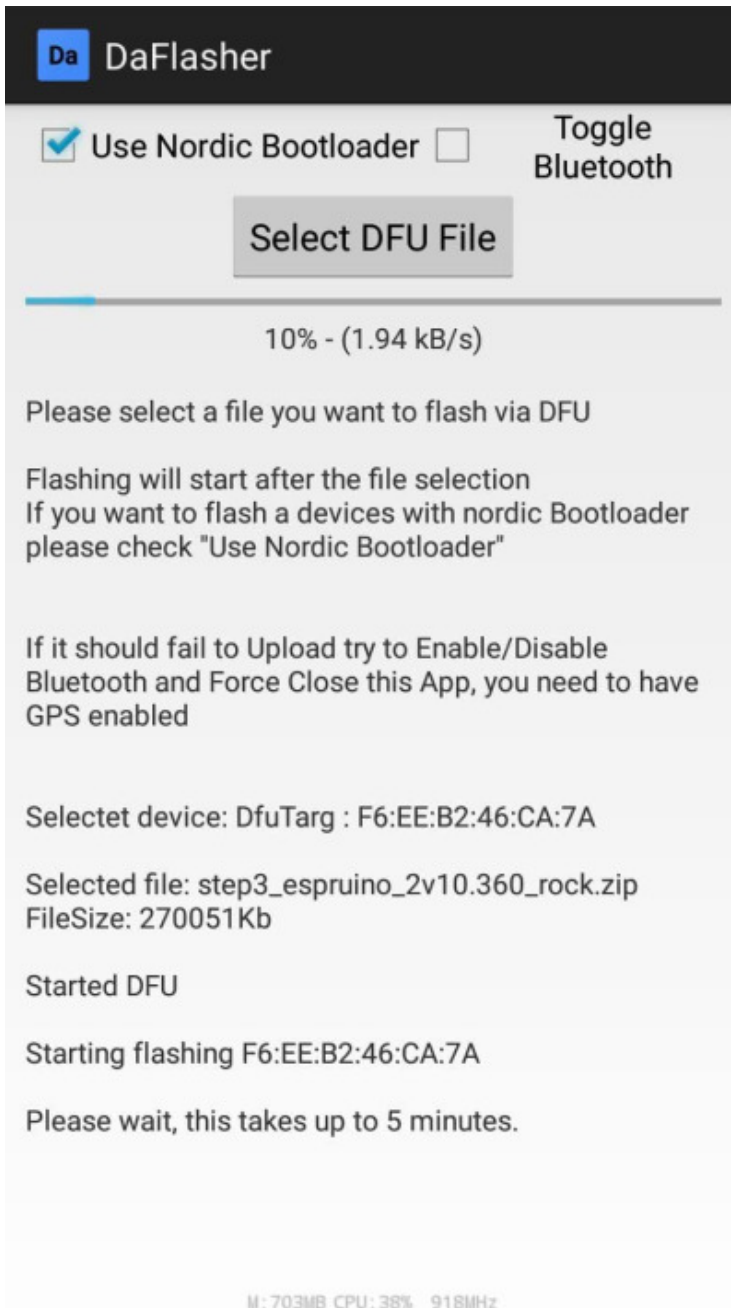


Step 3.

Open daFlasher, search for the Magic3/Rock and select it, it will be named as "DfuTarg".

Unselect **Toggle Bluetooth** and select the **Use Nordic Bootloader**.

Then press the **Select DFU file** button, and choose the step3 file.



When step three ends, the watch will be ready for the next step of the hacking part of the installation procedure.

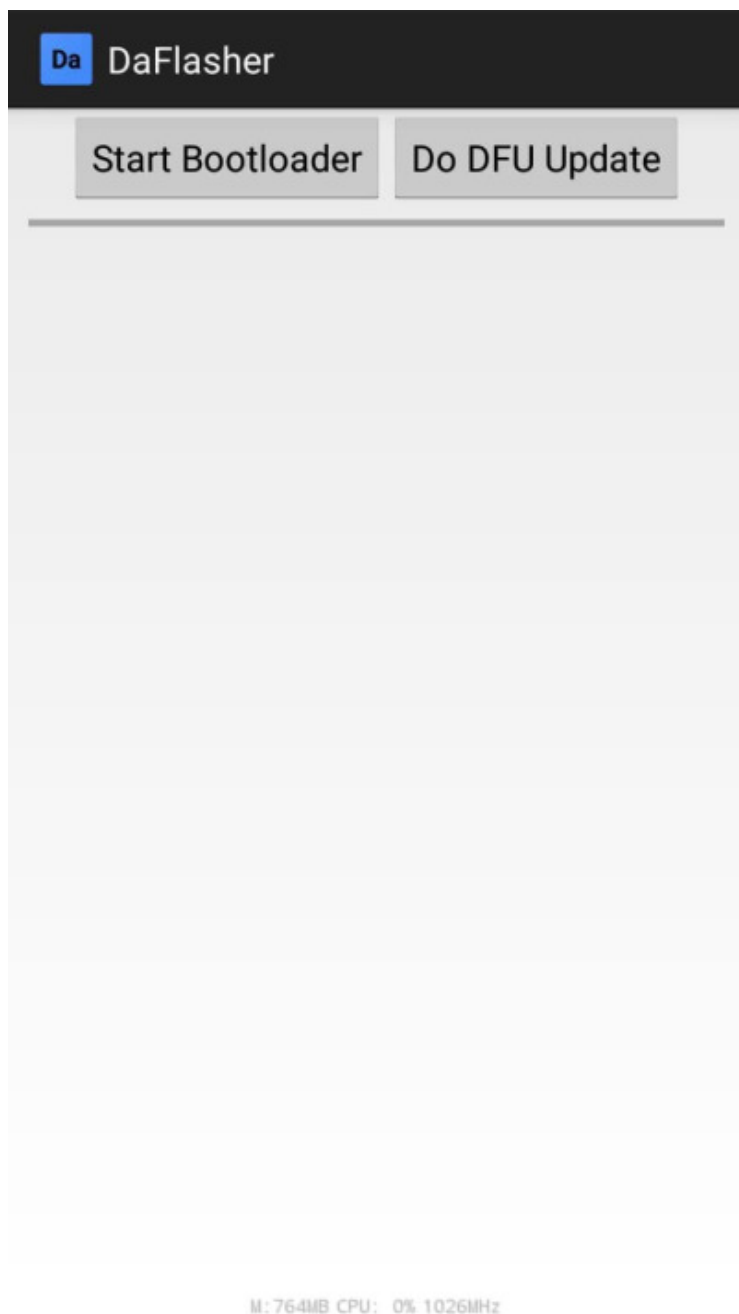
Step 4.

This step is a bit tricky, we need to downgrade the bluetooth softdevice, to do that we must manually take the watch to DFU mode.

Go back or kill Daflasher.

Open DaFlasher, search for the Magic3/Rock. It may be named as "MAGIC3_XXX", or it may be named "Unknown".

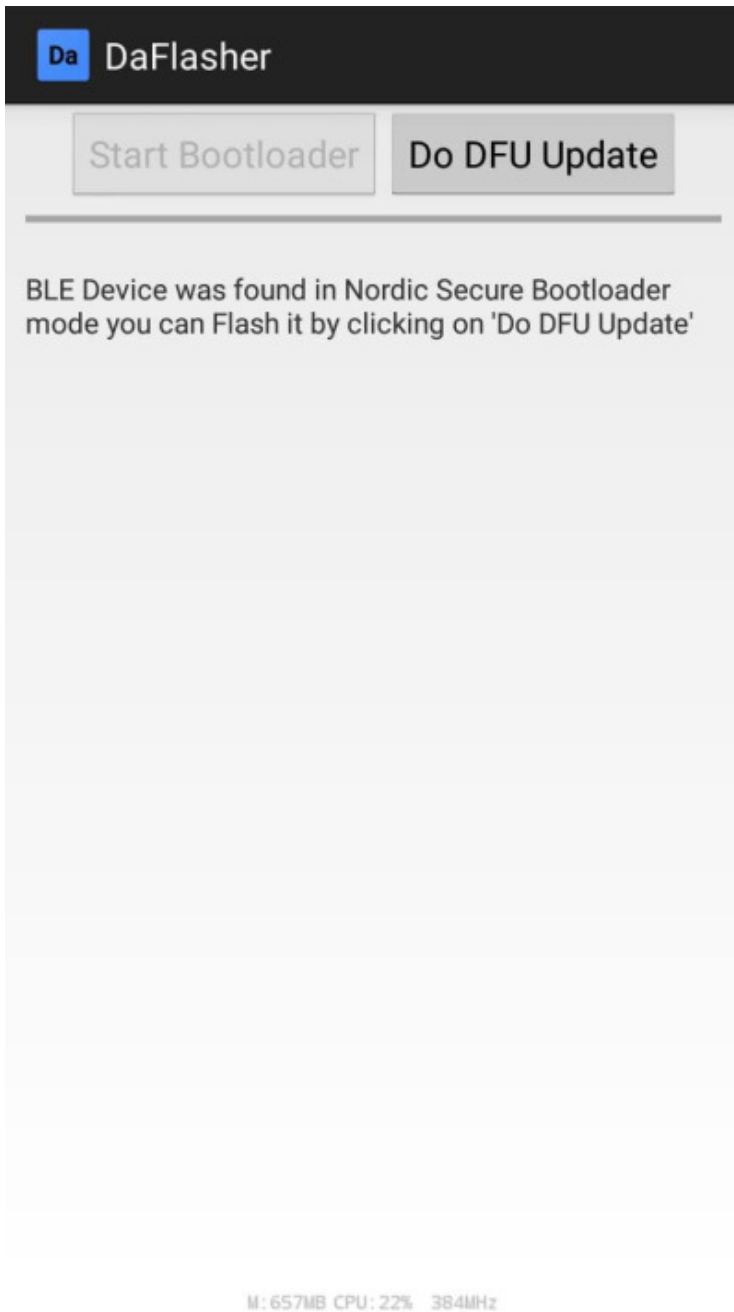
Select the watch, and on the next page press the "Start Bootloader" button.



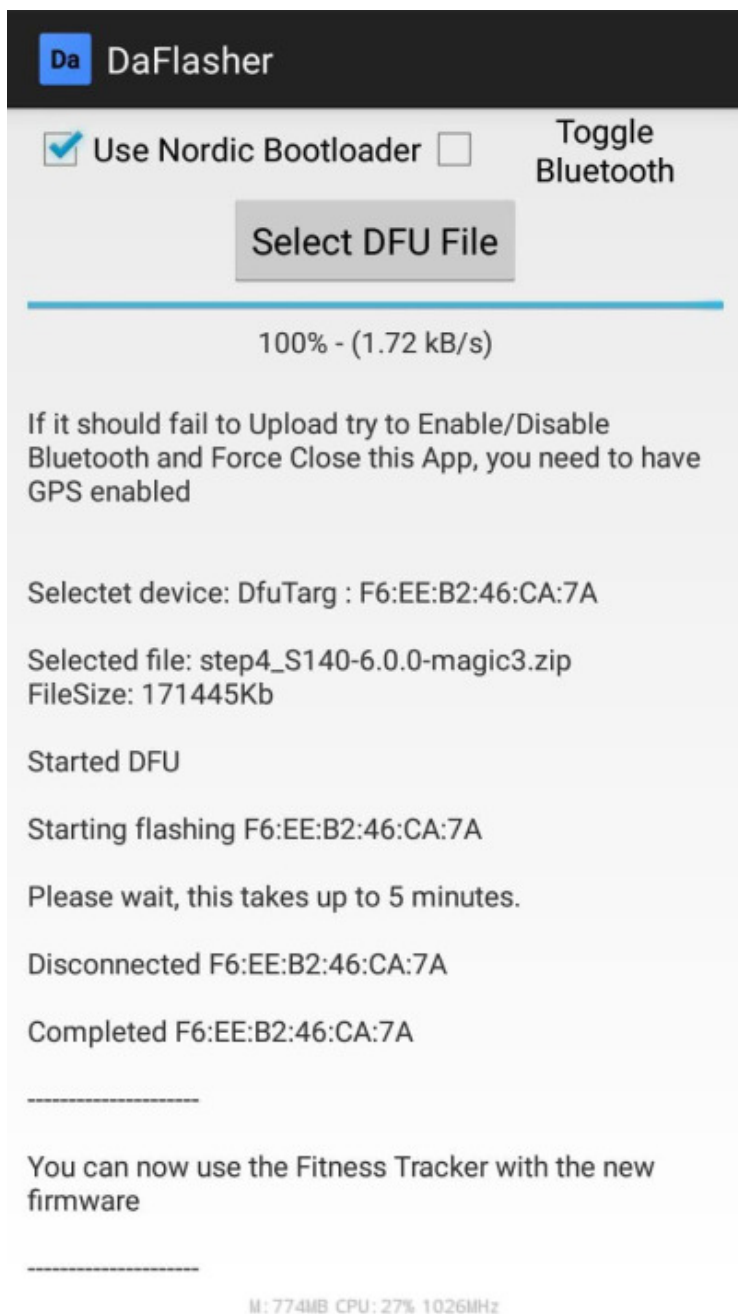
Go back or kill Daflasher.

Open daFlasher, search for the Magic3/Rock. It should be named "DfuTarg".

Select the watch, and on the next page press the "Do DFU Update" button. (the "start bootloader" button should be grayed out)



Unselect **Toggle Bluetooth** and select **Use Nordic Bootloader** option, then press the **Select DFU file** button, and choose the file `step4-xxx`.

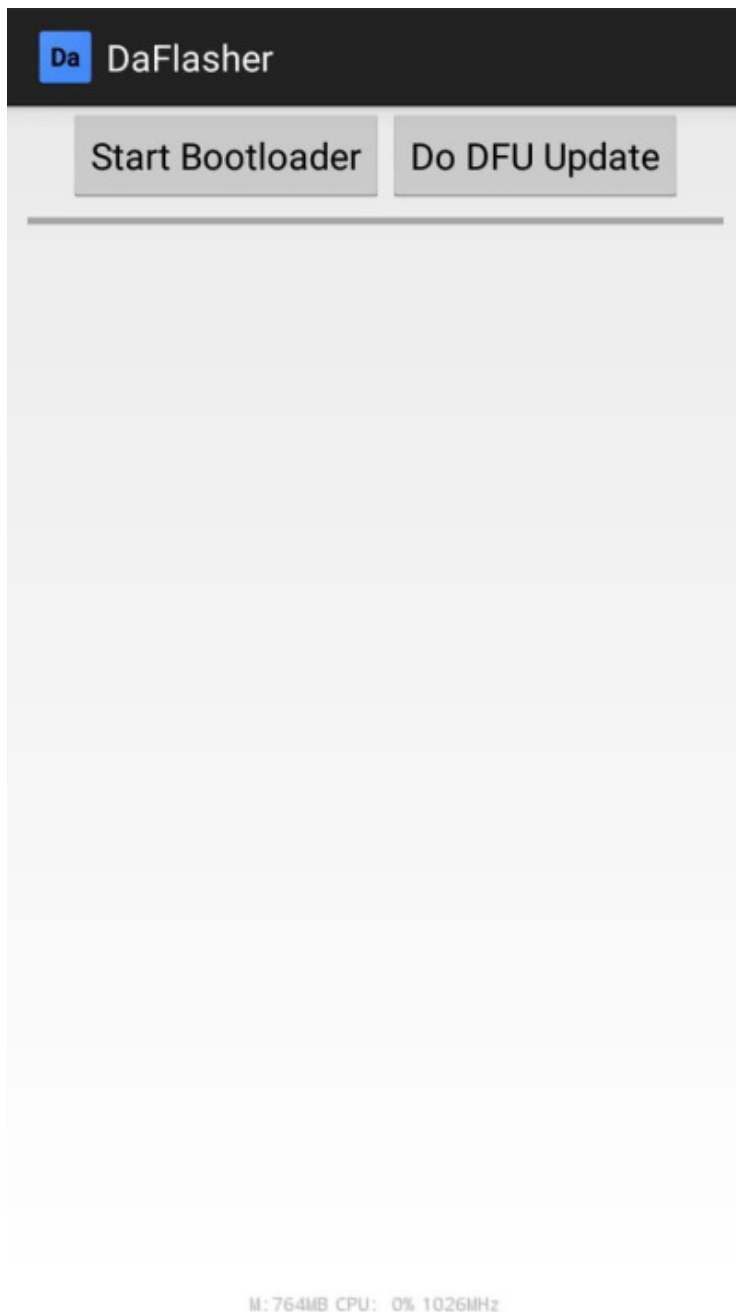


This step will take up to 5 minutes, and when done the watch screen will remain black/off.

Step 5.

Open DaFlasher, search for the Magic3/Rock. It will be named "MAGIC3_XXX".

Select the watch, and on the next page press the "Start Bootloader" button.



Go back or kill Daflasher.

Open daFlasher, search for the Magic3/Rock. It should be named "DfuTarg".

Select the watch, and on the next page press the "Do DFU Update" button. (the "start bootloader" button should be grayed out)

Note please make sure you have the correct step5 file for your watch, look for Magic or Rock in the filename.

When step three ends, the watch will be ready for the final step of the hacking part of the installation procedure.

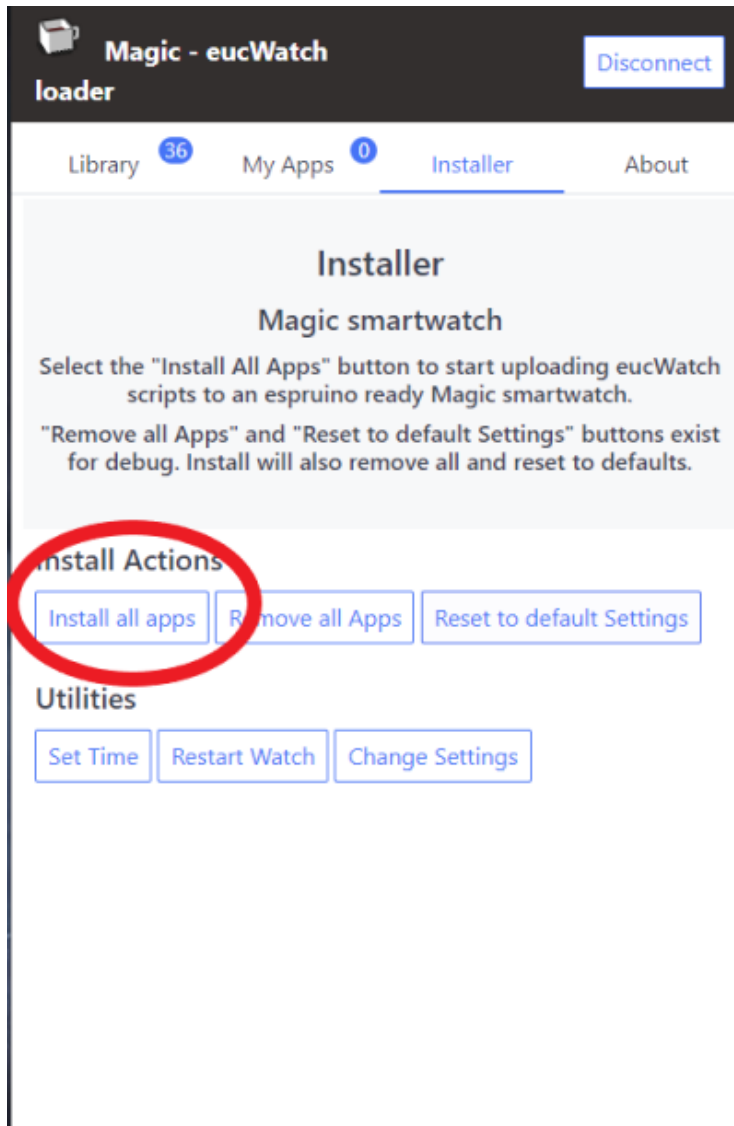
Post install

EucWatch Installation:

If all went ok disconnect the phone by turning off the BT radio, so that you will make sure the watch is disconnected, and go to the eucWatch [loader](#) using PC or android chromium based browser.

The loader is a web based app store service, using web Bluetooth technology it will connect to the watch, help install the scripts and keep you up to date by offering updates when available.

Using a chromium based browser, press the **connect** button (right top corner), connect to the watch (named MAGIC33xxx/ROCKxx etc), then on the installer tab select **Install All Apps**.



Note If the installation of scripts stops half way, repeat the installer process again.

Magic - eucWatch
loader Disconnect

Library 36 My Apps 0 Installer About

Installer

Magic smartwatch

Select the "Install All Apps" button to start uploading eucWatch scripts to an espruino ready Magic smartwatch.

"Remove all Apps" and "Reset to default Settings" buttons exist for debug. Install will also remove all and reset to defaults.

Install Actions

Install all apps Remove all Apps Reset to default Settings

Utilities

Set Time Restart Watch Change Settings

core - UI support (2/31)

Note When all sripts are installed, press the "Disconnect" button on top right for the watch to restart in working mode.

good luck :)