

WSD-F20 Quick Operation Guide



Smart Outdoor Watch

PRO TREK Smart
androidwear

Getting Ready to Use the Product

Important

- The “**Android Wear™**” app must be installed.
- Ensure that the watch is fully charged.


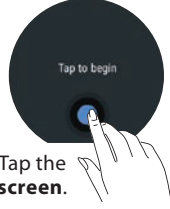

Procedures on the smartphone

Supported mobile phones • **Android™ 4.3 or later** • **iOS 9.0 or later**
(as of April 2017) * Some functions are not available when the phone is connected to an iOS device.

- 1 Install the “**Android Wear™**” app.
- 2* **Update the Google Play Developer service to the latest version.**
- 3* Update the **Google** app to the latest version.
- 4* Install the **CASIO MOMENT SETTER+** app.
(Use the new version for Android Wear 2.0. Older versions for Android Wear 1.x cannot be used.)

* Android-only procedure. CMS+ is recommended, but is not essential.



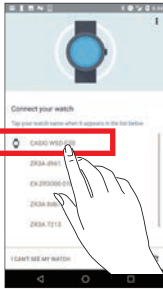
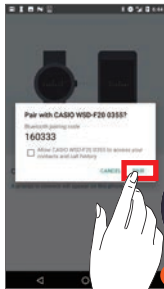
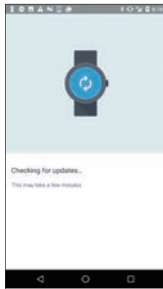
Procedures on the watch

- 1  Press the **Power button** on the watch.
- 2  Tap the **screen**.
- 3  Select the **language to be used**.

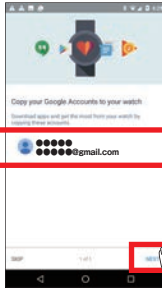

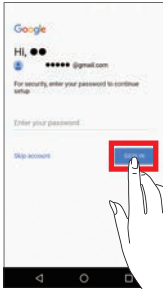
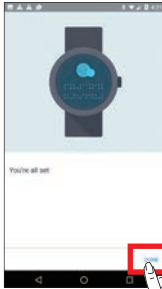

Pairing the watch with your smartphone 1 Android settings

Important

- **Activate the Bluetooth® connection** on your smartphone.
- Place the smartphone to be paired close to the watch (1 m or closer recommended).
- This description shows typical screen transitions.

- 1  Launch **Android Wear™** on the smartphone.
- 2  Tap “**SET IT UP**”.
- 3  Tap “**CASIO WSD-F20™**”.
- 4  When the pair settings screen appears, check the passkey and tap “**PAIR**”.
- 5  Update checking may continue for some time.

🔑 The same passkey shown on the smartphone screen appears on the watch screen.

- 6  Set only the accounts to be synchronized to **ON** and then tap “**Next**”.
- 7  Tap “**Copy**”.
- 8  Enter the password and tap “**SIGN IN**”.
- 9  Tap “**DONE**”.
- 10  Connection is completed.

Always make copies of the accounts. Important product auto updates will not function.

To ensure that the product is fully functional, configure the **settings on the watch** in “**Pairing the watch with your smartphone 2**”.



Pairing the watch with your smartphone 1

iPhone settings

Important

- Activate the Bluetooth® connection on your smartphone.
- Place the smartphone to be paired close to the watch (1 m or closer recommended).

1



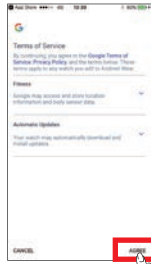
Launch **Android Wear™** on the smartphone.

2



Tap **"SET IT UP"**.

3



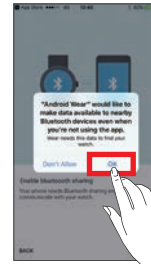
Tap **"AGREE"**.

4



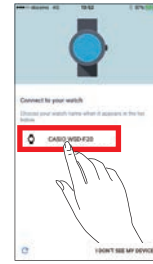
Tap **"ENABLE"**.

5



Tap **"OK"**.

6



Tap **"WSD-F20"**.

7



Tap **"pair"**.

8



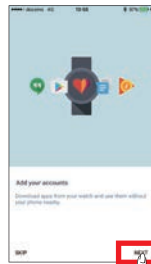
Once the same passkey shown on the watch appears, tap **"CONFIRM"**.

9



Update checking may continue for several minutes.

10



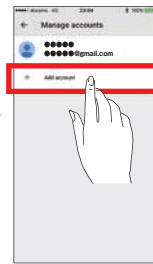
Tap **"NEXT"**.

11



Tap **"EDIT"**.

12



Tap **"Add account"**.

13



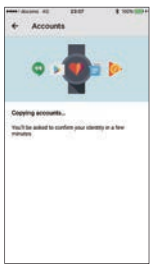
Input your account.

14

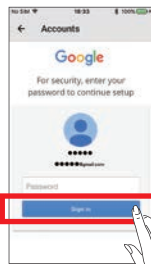


Tap **slider**.

15



16



Enter the account password and tap **"Sign in"**.

17



Tap **"NEXT"**.

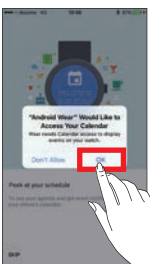
18



Tap **"SYNC"**.

! You must create a login account in Google. Auto update will not function without account information.

19



Tap **"OK"**.

20



Tap **"NEXT"**.

21



Tap **"Allow"**.

22



Tap **"DONE"**.

23



Connection is completed.

To ensure that the product is fully functional, configure the settings on the watch in "Pairing the watch with your smartphone".



Pairing the watch with your smartphone ②

Watch settings

Steps in the procedure

- ① Prepare the watch so that Google "Play Store" is ready for use.
- ② Run the "Tutorial" displayed by Google.
- ③ Configure the location information settings in "Smartphone and watch".
- ④ In "Apps", enable all the "Permissions" for Casio apps.
- ⑤ Enable the "Save daily activity records" setting.
- ⑥ Enable the "Save Daily Location Info" setting.

Important

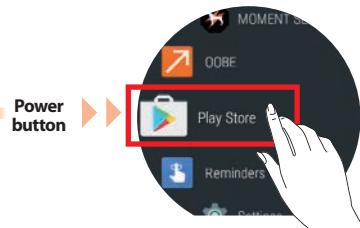
These steps are important for ensuring that the functions of the Casio apps and watch face display are **100% available**. Steps ① to ⑥ **must always be configured beforehand**.

1 Prepare the watch so that Google "Play Store" is ready for use.

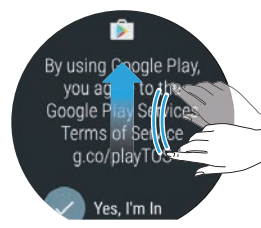
- To use an **iPhone**, a **Wi-Fi connection** is required.
- This step enables you to use features such as Auto Update and to purchase additional apps.



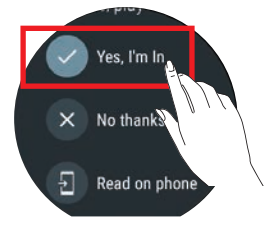
Press the **Power button** on the watch.



Tap "**Play Store**" in the list of apps.



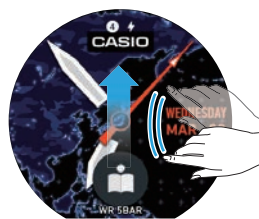
Swipe **up** on the screen.



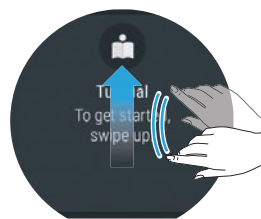
Tap "**Yes, I'm In**".
You can now use Play Store.

2 Run the "Tutorial" displayed by Google.

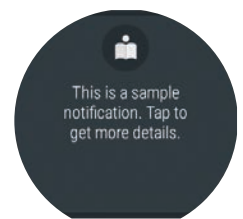
- When the watch is paired with a terminal and ready to use, a tutorial appears several times on the watch screen.
- You should **follow the steps in the tutorial at least once**, as it includes important steps in preparing the OS.



Swipe **up** on the screen.



Swipe **up** on the screen.



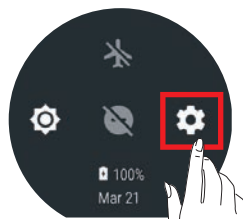
Follow the on-screen instructions.

3 Configure the location information settings in "Smartphone and watch".

Unless you plan to use "Activity", "Location Memory", "Location" or "Traveler", there is **no need to set the "location information"**.



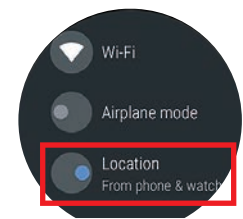
Swipe **down** on the screen.



Tap "**Settings**".



Swipe up and tap "**Connectivity**".



Check that "**From phone & watch**" under "**Location**" is enabled.

This follows on from step 3 in "Pairing the watch with your smartphone 2".

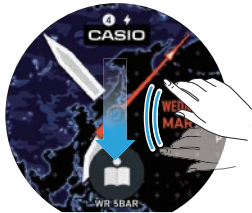


Pairing the watch with your smartphone 2

Watch settings

4 In "Apps", enable all the "Permissions" for Casio apps.

- Unless you plan to use "Activity", "Location Memory", "Location" or "Traveler", there is no need for "location information" permissions.
- If you do not plan to use "Location Memory", there is no need for "Microphone" permissions.
- If you do not plan to use "Traveler", there is no need for "Calendar" permissions.



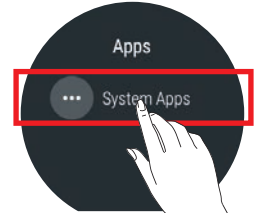
Swipe down on the screen.



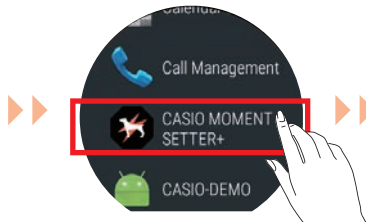
Tap "Settings".



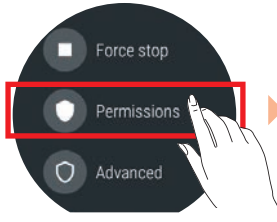
In the "Settings" screen, swipe up and tap "Apps".



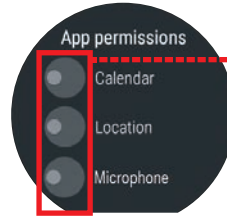
Tap "System Apps".



Find and tap "CASIO MOMENT SETTER+".



Tap "Permissions".



In the app permissions screen, set "Location", "Calendar" and "Microphone" to ON. (Tap and slide the switch to the right.)

* "Microphone" is disabled after Auto Update.

5 Enable the "Save daily activity records" setting.

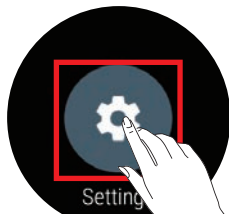
If you omit this step, you will not be able to use "TOOL: My Graph".



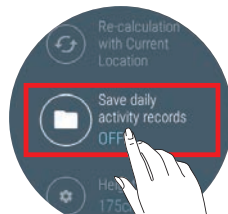
With a watch face displayed, press the "TOOL" button.



Swipe left on the screen.



Tap "Settings".



Tap "Save daily activity records" and set it to ON.



Tap "I agree".

6 Enable the "Save Daily Location Info" setting.

If you omit this step, you will not be able to use the "Route Display", "Check History" or "Revisit" functions in "Location Notes".



With a watch face displayed, press the "APP" button.



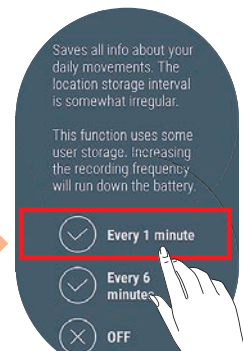
Swipe up on the screen.



Tap "Settings".



Tap "Save Daily Location Info".



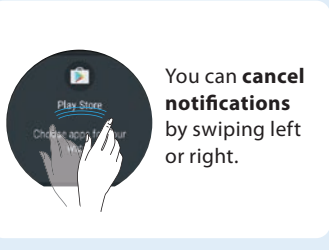
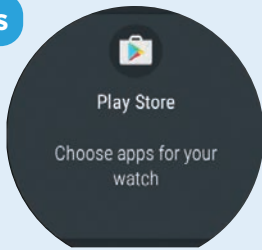
Tap "Every 1 minute" or "Every 6 minutes".

Main Screen Transitions

You can operate this smartwatch by swiping its touchscreen with your finger.

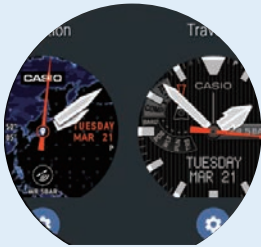
Notifications

Configure the various notifications.



Watch face settings

This watch features **nine Casio original watch faces** that you can switch between whenever you like.



*See "Changing/Adding original watch faces" for details.

Swipe **up** on the watch face display.

Watch face display

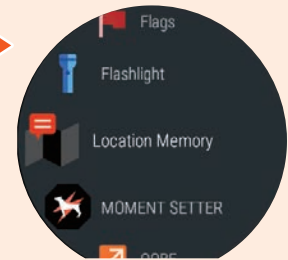
Swipe **right or left** on the watch face display.



Swipe **down** on the watch face display.

Apps list

This screen displays a list of the available apps.

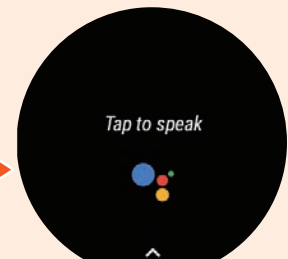


Press once

* See "Launching/Adding apps" for details.

Google Voice Search™

The Voice Search screen is displayed.

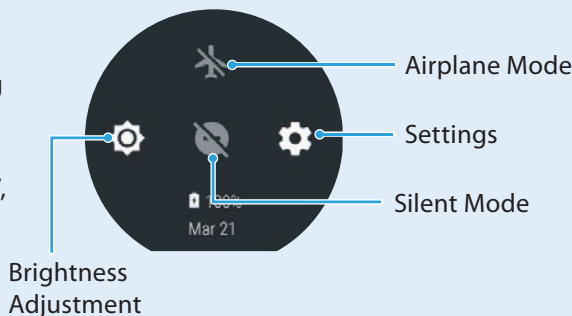


Hold down for 2 seconds

* See "Basic voice operations" for details.

Settings

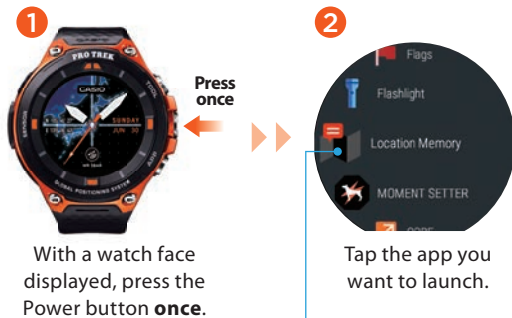
You can use this setting to configure the "Brightness Adjustment", "Airplane Mode", "Settings" and "Silent Mode".



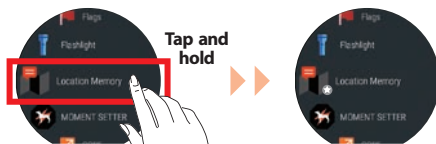


Launching/Adding apps

Launching an app



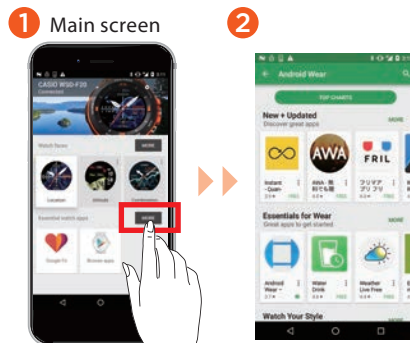
By **holding your finger** on the app so that a star ★ appears next to the app, you can **assign the highest priority** to the app.



Adding an app

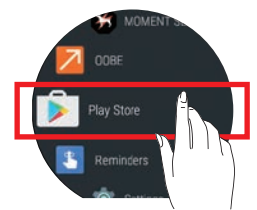
To add an app, you need to install the app on both the smartphone and the watch. (Installation on the smartphone may not be necessary for some apps.)

Procedure from the smartphone



In the **Android Wear™** main screen, tap **"MORE"** in **"Essential watch apps"**.

Procedure from the watch



Tap **"Play Store"** and install your chosen app on the watch.



Basic voice operations



You can engage in activities such as the following by holding the watch up and **giving spoken instructions**.

- Writing memos and setting reminders, alarms and the timer
- Checking your schedule
- Replying to e-mail and SNS messages
- Checking for information on the weather, sport, movies, etc.
- Looking up the meanings of words and converting currency

The supported functions differ depending on the platform, device and country. You cannot use e-mail or send SNS messages with an iPhone (iOS).

To set an alarm <Only one alarm can be set at 7:00 am>



Hold down (2 seconds or longer)

Microphone

With a watch face displayed, **hold down the Power button for at least 2 seconds**.

You can also do this without pressing any buttons by saying **"OK, Google"**. (To use **"OK Google"**, you must first go to **Settings > Personalization** and enable **"OK Google"** detection.)

Tap the screen and say **"Set the alarm at 7:00 am"**.

Tap **"Continue in Clock"**.

When the set time is reached, the watch displays the **alarm screen** and **vibrates** to let you know.

* The watch alarm does not emit a sound.



Changing/Adding original watch faces

Original watch faces

This watch features nine **Casio original watch faces** that you can switch between whenever you like.

NEW Traveler

- 1 Tap the **"function dial"** in the top left corner.
- 2 Each time you tap the function dial, the information shown in the **"information window"** in the lower part of the screen changes.

Information window

| | | | |
|------------------|------------|-------------|-----------------|
| | | | |
| Date | Altimeter | Compass | Barometer |
| | | | |
| Current location | World time | Action plan | Translation app |

NEW

| | | |
|------------|---------------|--------------|
| | | |
| [Location] | [Traveler] | [2 Layers] |
| | | |
| [Multi] | [Combination] | [Field] |
| | | |
| [Altitude] | [Authentic] | [World Time] |

Changing the watch face

- 1 Watch face display

Swipe either left or right in the watch face display.

- 2 Select an option from the **"Favorites"**.

In the **"Favorites"** list, choose a screen you like and tap to set it.

Adding a watch face (on the smartphone)

- 1
- 2
- 3

In the **Android Wear™** main screen, tap **"MORE"** in **"Watch Faces"**.

Tap **"Get more watch faces"**.

Select the watch face you want to add and install it.

Adding a watch face to "Favorites" (on the watch)

You can add a watch face to **"Favorites"** by selecting the watch face from **Add more watch faces**.

- 1
- 2

Tap **"Add more watch faces"**.

You can **swipe up or down** to choose your preferred face.



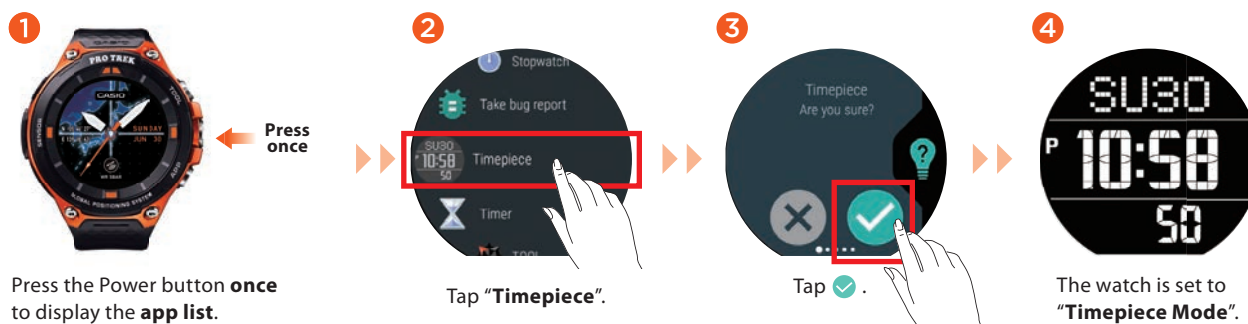
Setting and canceling Timepiece Mode

When you use the Timepiece app, all watch functions other than showing the time on the monochrome LCD are disabled.

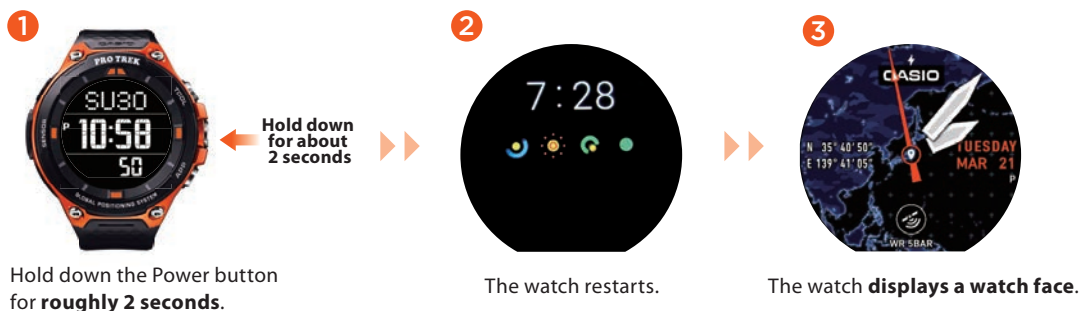
Because Timepiece Mode uses only a tiny amount of power, it is very useful when you want to conserve as much battery power as possible but still display the time.



Setting Timepiece Mode



Canceling Timepiece Mode



Functions available without a smartphone connection

The functions shown below can still be used when the watch is not paired with a smartphone. (However, to reset the watch so that it can be used, you will need a smartphone.)

- TOOL functions (Compass, Altimeter, Barometer, Sunrise/sunset time, Tide Graph, My Graph)
- Checking the time and date
- Setting an alarm
- Using the stopwatch
- Using the timer
- Counting the number of steps
- Changing the watch face
- Setting the watch to Airplane Mode
- Listening to music on your watch
 - * Only if a Bluetooth® headset is connected to the watch and the music files are already installed

See **"Android Wear Help"** for details. <https://support.google.com/androidwear/>